



NEWS

10th Anniversary
2001 ~ 2011

Summer 2011

A large construction site with two orange excavators on a gravel surface. In the background, there are trees and a building. A sign for 'LARK' is visible on the right.

Cloverdale: New Home of FVHRS

Pages 2 - 6

A photograph of railway tracks running through a grassy area with some buildings in the background.

Annual Volunteer Dinner

Pages 8 - 9

Annual General Meeting

Pages 10 - 11

Last Sullivan Open House

Page 12

Sponsor & Donor Salute

Page 16 - 19

TEN YEARS ON WE'RE MOVING ON...TO CLOVERDALE

- Report from the Chair, John Sprung

This year we celebrate ten years as a society, and it amazes me what has been accomplished and the numbers of people we have welcomed at Sullivan. The FVHRS started following a request by the City of Surrey Council to form a non-profit society to acquire and operate a heritage rail service. Ten years later we're on the brink of operating!

After eight years at Sullivan Station, Surrey Council asked us to relocate to Cloverdale, the historic centre of Surrey. The City allocated \$2.9 million, in January 2011, towards the construction of a new and larger, car barn on property next to the rail right of way, connect the new barn to the existing spur line and commence operations.

So now we start the next 10 years with a new home address of 5554 176 St. across from the Red Barn. There is more information on the new car barn and the site on the following pages, however it is important to recognize the support provided by Surrey Council, and city staff, in what we have achieved, and what we will bring to Cloverdale and Surrey. City staff have worked flat out with enthusiasm, and processed the development permit in record time.

We have a wonderful design for the car barn by Sightlines Architecture that is larger (three bays), has a concrete floor, workshop, lunch room, washroom and a future shower. Most importantly we will have fire protection sprinklers throughout the barn. Sewer and water services are also being installed to connect to the future Cloverdale station.

Surrey has big things planned for Cloverdale in the future and so we have included space to house Cloverdale's Car 30 streetcar named the "Cloverbelle" until it can be restored for use in a new streetcar project in downtown Cloverdale. We have allocated space on the site for a future car barn expansion for the streetcar operations.

The original plan was to start construction of the new barn earlier in the summer, however, early work on site preparation revealed some unexpected environmental contamination that required extra work to remove. Now

that this has been successfully completed, the Lark Group with RDM Enterprises, have completed the pre-construction site services work. We now hope to start construction of the car barn by the end of the year, and be ready to start operations during the summer of 2012.

Moving from Sullivan means we will turn over the existing car barn and property to the city. The speeder tracks and storage trailer will be removed along with the contents of the workshop, storage and office. BCER 1225 and BCER 1304 will be moved to Cloverdale next spring,

when the ground conditions are suitable for the lifting equipment – once again you will have a chance to see train cars fly in Surrey!

Other details include the commissioning of the building and "donkey" power cart and delivery to Cloverdale. Then the real fun begins, re-commissioning BCER 1225, testing the power connections and then training the FVHRS motor(wo)men and conductors. At the same time PNR Railworks will install the switches and new track connection from the car barn to the "Cloverdale spur" – the original BCER track – then we can really go for a ride!

We have other accomplishments reported in this issue, our 5th Annual Volunteer

Appreciation Dinner, the 10th Annual General Meeting, and also the success of the previous fund-raising camping "One Passenger at a Time." The City of Surrey continues to be our main supporter, but has always pointed out correctly that they should not, and cannot, be the only source of funds. With the City's new funding for a replacement barn in Cloverdale, we must now fund-raise to build a replica of the original Cloverdale Station, and eventually move the power generator for 1225 into a replica baggage car. We've not forgotten the 'Connaught' - BCER 1304 – as we will need to access funding support to get her operational and back on the original Fraser Valley line again.

Your society has come a long way in ten years; just watch as the next ten speed by on the Fraser Valley line!



SURREY COUNCIL SUPPORTS MOVE TO CLOVERDALE

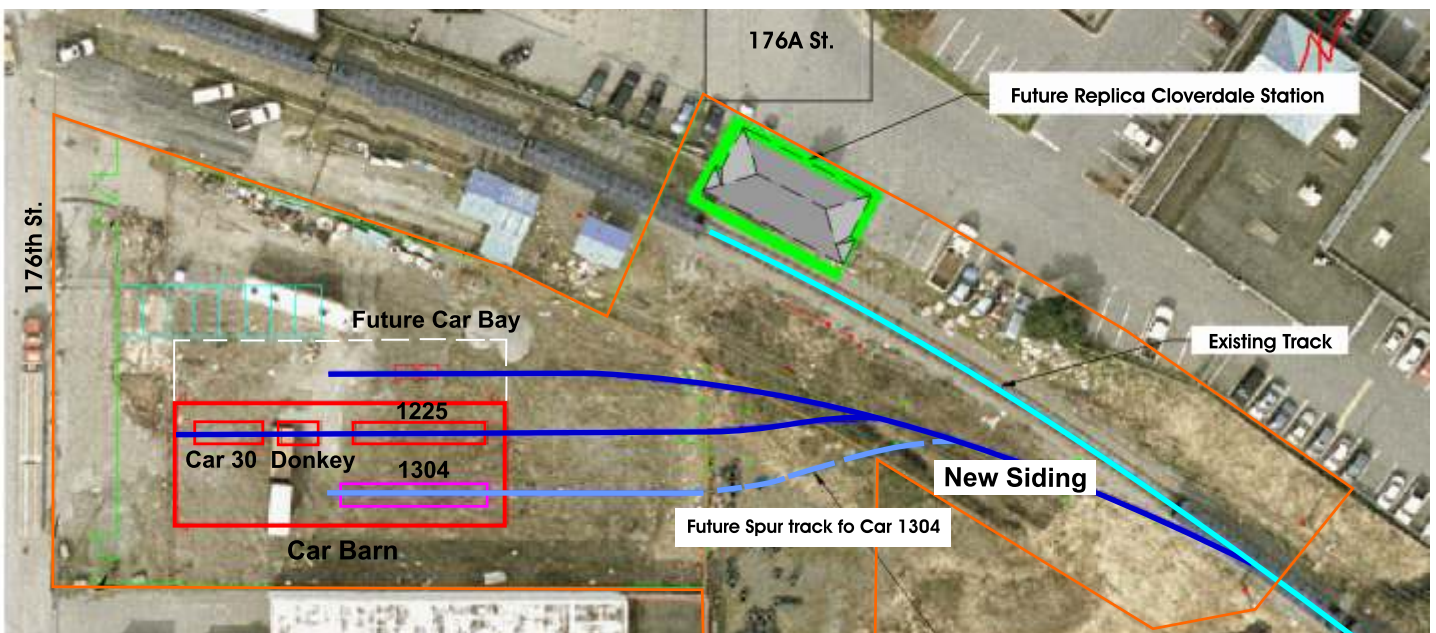
- Will Operate At Historic BCER Location



The new FVHRS location at 176th Street was formerly used as a commercial fuel cardlock. The property, recently acquired by the City of Surrey is directly south of the Clydesdale Inn and across from the well known Red Barn on 176th Street.

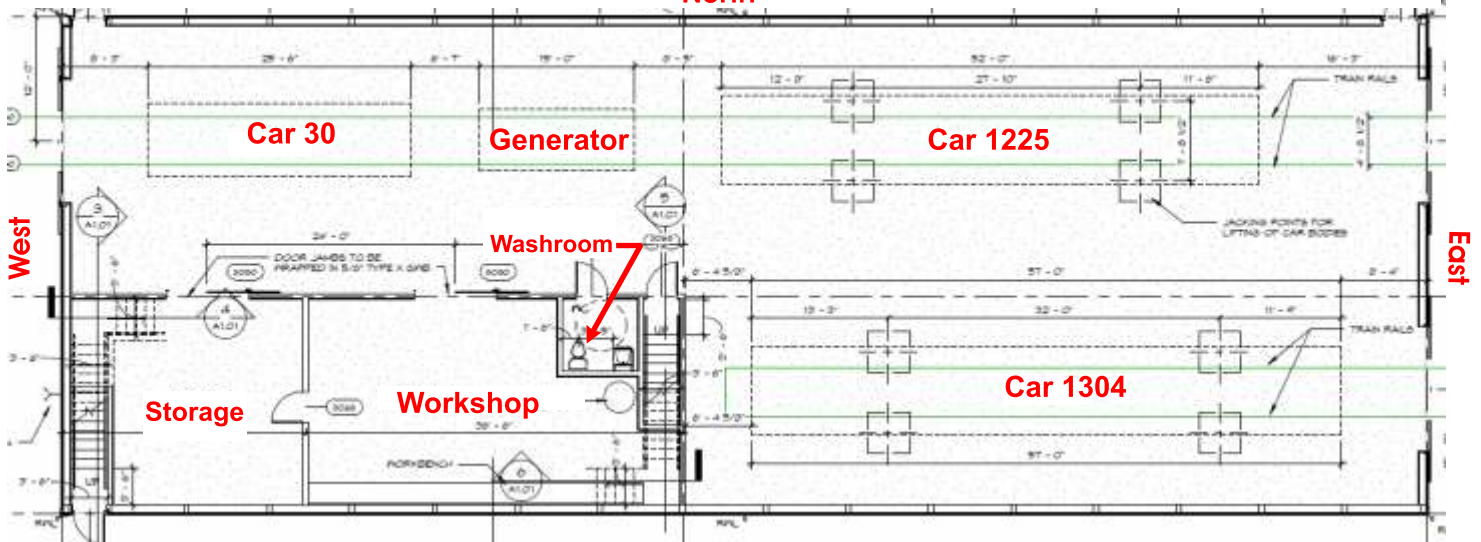
As seen on the front cover and later pages of this newsletter, work is well underway to install the site services for storm drains and other services on the property. There had originally been an expectation that the project would be further along by now, however unexpected contaminated soil conditions have delayed the start date of the new barn. Completion date remains Spring of 2012.

The diagram below shows the FVHRS site, location of the car barn, new tracks and future station.



Plan View

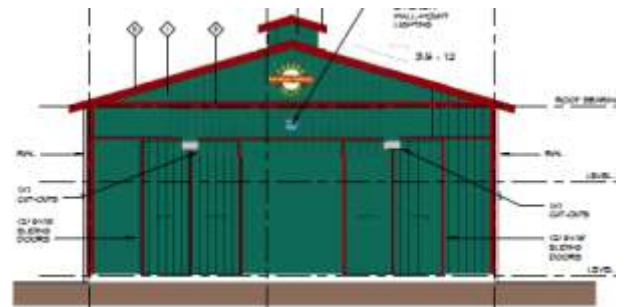
North



The new car barn, twice the length in order to accommodate BCER 1225 and 1304, as well as a future replica baggage (power) car - 1304 will undergo rehabilitation at this location. In addition, the barn will also house Car 30 “Cloverbelle” streetcar which is expected to operate north along 176th Street through Cloverdale.

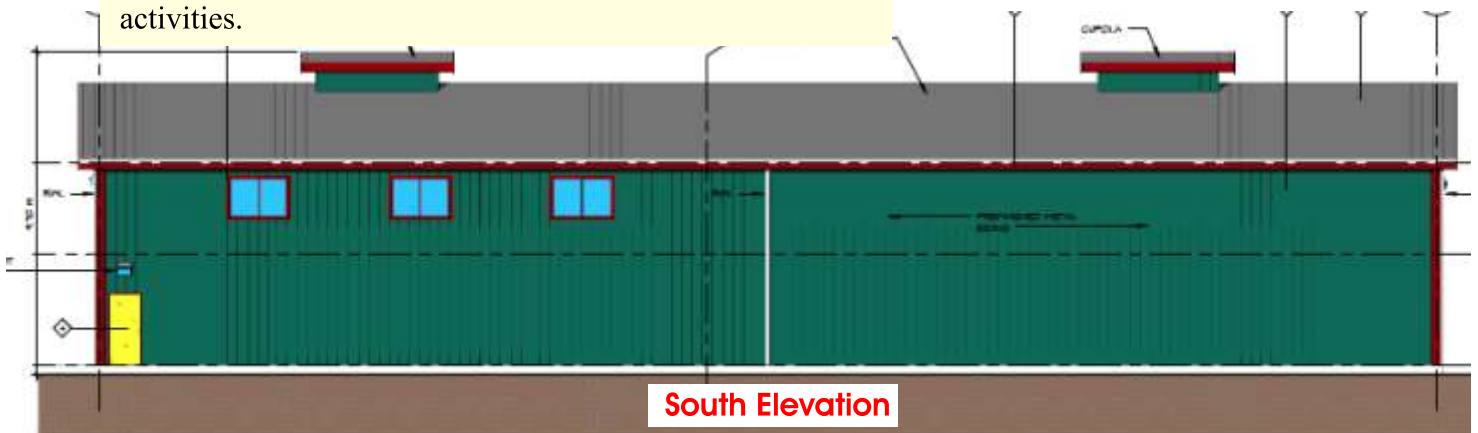
The barn will include a workshop with washroom and the building will have a concrete floor. Above the workshop there will be an office/meeting and lunch room (where the windows are) with washroom facilities as well. Most critically, the barn will be equipped with a security monitoring system and “sprinkler” fire suppression system to protect the cars & equipment.

Unlike the Sullivan barn, the new facility, intended for the rehabilitation of 1304 and maintenance of all cars, will not be a ‘public space’ for regular open house activities. The Cloverdale station will become the focus for public activities.



East Elevation

Designed by Sitalines
Architecture Inc.
of Fort Langley



South Elevation

Replica Cloverdale Station

Summer 2011

5

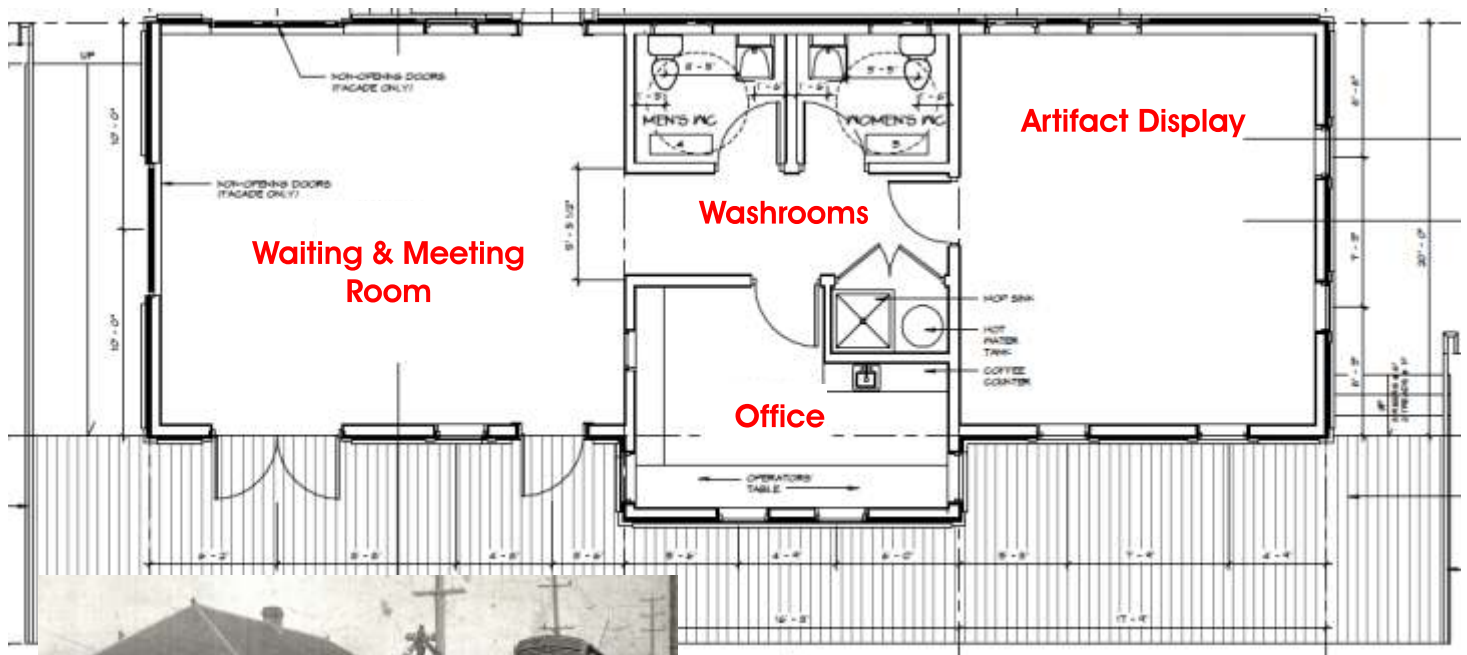


Designed by Sitelines Architecture Inc.
Fort. Langley, BC based on drawings
prepared by David Reuss

The replica Cloverdale station, will be community funded by our “Cloverdale to Sullivan” fundraising campaign, and will be based on the original blueprints (see photo) and sited as near the original location as possible.

The station will become the focal point for all public activities, will have a central office and restroom area

with meeting and event presentation rooms on either side. The passenger waiting room (20'x20') will double as a meeting room. The other room (20'x17') will house displays of artifacts and memorabilia representing the history of the BC Electric Railway, which have been donated to the FVHRS.



***Your opportunity to donate to the
“Cloverdale to Sullivan” campaign
and help recreate history!***

(Please see back page for details)

Cloverdale Site Preparation

Summer 2011



Members of the board and volunteers February 2011



176th Street site services installed July/August 2011



Refurbishing 1225's Trucks

Summer 2011

7



- Enormous effort by FVHRS volunteers and Carr's Machining



Wayne Abbott & Larry Perkins
FVHRS Volunteers



Director, Bill Watson



Shane Carr



Shane Carr, and Directors
Allen Aubert, Roy Mufford,
and John Sprung





City of Surrey's Project Liaison engineer, Paul Lee, with Chair John Sprung



Keynote Speaker Michael Schiffer
VP Planning Strategy & Technology
TransLink, on Heritage Rail in Chicago



Schiffer with FVHRS Pin & Cap

The Hampton Inn & Suites on the Langley Bypass was the scene of the fifth annual Volunteer Dinner in November 2010.

One of the memorable events was the keynote speaker Michael Schiffer, a VP with TransLink, who entertained the members with an amazing PowerPoint presentation of historic photos and his experiences with heritage rail in and around Chicago, Il. Clearly a passionate rail buff he was right at home with his west coast heritage rail colleagues.

Paul Lee, the project liaison engineer with the city of Surrey reported on the city's perspective of the project and Shane Carr reported on the rehabilitation progress on the trucks for 1225.

Once again, the 'dessert' was another fabulous AV presentation of the year's work by Vice-Chair, Bob Ashton.



Ron Jones, Director Rene
Doyharcabal, Doug Hunt



Director
Peter Holt



BCER Motorman
Frank Horne



Sten Christiansen



John Welsh



Director Bill Watson



Roy Griffith



Director Roy Mufford &
Treasurer Stephen Plant



Director Jerry Gosling
& Wayne Abbott



Neil Wilke

Celebrating Our Volunteers

Summer 2011

- 5th Annual Volunteer Dinner

9



Vice-Chair Bob Ashton



Shane Carr and Chair John Sprung



Secretary Allen and Liz Aubert



Ken Silen



Judy Higgenbotham, life member



Lloyd Knoblauch



Henry Ewert



Director Ron Powers



Vince Holmes



Richard Sutcliffe



Ben Bentley & Mary-Lou McCausland
Event band members-Circle of Friends



Remembering Norman Neil McLeod 1937 – 2011

Neil was born in Vancouver B. C. on May 4 , 1937. He attended North Vancouver High School where he distinguished himself as a track athlete.

Neil joined the FVHRS crew of volunteer workers in the spring of 2008 where he worked on the rehabilitation of Interurban car 1225. Suffering from congenital heart disease, Neil had many heart operations over the years. In December 2010, his kidneys couldn't keep up with demand from his heart, and began to fail. Realizing that further surgery was risky and would not be effective, it was decided to withdraw heroic life support measures, and he passed away peacefully on February 24, 2011.

Neil is survived by his loving wife, Mary; his four daughters-Karen, Donna, Cheryl(Pete) and Vicky(Brian); step-daughter, Marianne (Bill) and step-son, Charles (BJ), many grandchildren, and two great-grandchildren.

He was an exceptional friend, and will be greatly missed.

- April 30, 2011 at the Hampton Inn Langley ByPass

Report from Chair John Sprung

2010 was a milestone year with the FVHRS preparing to celebrate its 10th anniversary as a registered society. The proposed relocation to Cloverdale is to be the highlight activity planned for the fall of 2011. The city of Surrey approved funding in January 2011 to enable the FVHRS to relocate to a new facility to be constructed in Cloverdale and to become operational as a 'demonstration project' between Cloverdale and Sullivan in 2012.

To set the scene, John outlined the history of the Fraser Valley interurban line from inception of construction in 1907 to the closing down of passenger services in 1950. John outlined the history and formation of the society in 2001 after several years of work by the city of Surrey Heritage Advisory Commission, commenced (in 1996) as a special project to investigate the feasibility of reactivating the historic line again for passenger service. John related how the construction of the Fraser Valley line by BC Electric led to electricity being made available to the population of the valley including most importantly the agriculture and dairy industry.

John commented that the BC Electric interurban service connected down town Vancouver with Chilliwack with 4 trips a day and this serviced a population of 87,000 when it was shut down. The Fraser Valley line took 3 years to construct and is 63.8 miles in length. The construction of the line was an enormous achievement as there was little in the way of mechanical equipment available to handle the heavy work in those days.

John recalled that at the end of service only 7 interurbans from the fleet were saved from destruction. BCER 1225 closed the service in the lower mainland

and spent the years following in Perris California at the Orange Empire Railway Museum before returning to BC and the FVHRS Sullivan facility in August 2005. Over 16,500 hours of volunteer time has been donated so far, to rehabilitate 1225 to operating condition. With our sister society, the Steveston Interurban Restoration Society (SIRS), BCER 1304, the only surviving Chilliwack car, was

repatriated from the Oregon Electric Railway Historical Society in Oregon to BC and the FVHRS Sullivan carbarn in 2009. Rehabilitation on 1304 has not commenced fully yet, other than cosmetically.

John outlined the work that has been accomplished to construct the Sullivan carbarn, workshop, replica Sullivan station and installation of the speeder track around the Sullivan compound.

The move to Cloverdale will include construction of a new carbarn twice the size of the Sullivan structure, complete with concrete floors, a sprinkler system and, most importantly, indoor plumbing and flush toilets!

The city of Surrey awarded \$2.9 million to the Cloverdale project with sufficient funds to not only complete the construction of the new carbarn but also to connect the barn to the SRY spur line in Cloverdale and to make the project operational.

The 2012 operational phase will be a 'demonstration project' running between Cloverdale and Sullivan as 'a proof of concept'. Over time it is expected to expand the route west to Newton, Kennedy and finally to Scott Road adjacent to the Scott Road Skytrain station.

More AGM Material on next page



Annual General Meeting 2011

Fundraising Chair's report

Allen Aubert, Fundraising Chair noted that fundraising had been focused upon the \$1.5 million 'one passenger at a time' campaign with a major funding request being made to the city of Surrey. The city of Surrey on January 10th approved \$2.9 million toward the heritage rail project and as such brought the campaign to a successful close. The funding included the city purchase of property in Cloverdale for construction of a new heritage rail car barn, funds to connect to the existing rail line spur in Cloverdale, the acquisition of a power source to run BCER 1225 as well as funds necessary to cover liability operating insurance for one year. The city funding completed the objectives set out in the one passenger at a time campaign and took the project even further.

The city have requested that the FVHRS now work toward raising an additional \$1.5 million to construct the replica Cloverdale station, acquisition of a replica self propelled BCER baggage car and to rehabilitate BCER 1304.

A new \$1.5million fundraising campaign themed 'Cloverdale to Sullivan' has been launched to accomplish this next phase of activity. For each \$50 donated the FVHRS will issue a tax receipt and a complimentary return ticket to ride BCER 1225 between Cloverdale and Sullivan once during 2012 or 2013.

The Surrey Heritage Advisory Commission (SHAC) provided a grant of \$10,000 toward a Fraser Valley rail trip from New Westminster to Chilliwack to celebrate the 100th anniversary of the opening of the Fraser Valley line. That trip had to be cancelled at the last minute due to technical difficulties. The trip will, how-ever be rescheduled as soon as possible. The FVHRS partner to the trip, SRY Rail Link, remains committed to it.

The FVHRS membership donated \$17,105.00 during 2010.



Address by Councillor Barbara Steele

Councillor Steele brought greetings from Mayor Watts and Surrey Council and stated how pleased council was with the progress that the volunteers of the FVHRS have made to rehabilitate BCER 1225 to the stage where that car is about to become operational. Councillor Steele commented that she was grateful to everyone involved and assured the meeting that she and

Council are looking forward to the official opening at the Cloverdale site later in the year.

Election of Board of directors

Bob Ashton the nominations chairman reported that there were a total of 11 board member positions. Board membership terms are for 2 years with 4 members ending their terms this year. Directors Ron Powers, Ray Hudson, Peter Holt and John Sprung have agreed to run for a further 2-year term. Bill Watson has been nominated to a 2-year term making up a board membership of 10. There have been no nominations from the membership. With one vacancy remaining there will not be an election.

Moved by Bob Ashton 2nd by Doug Watkins that the 5 members standing for election be approved. Carried.





Bye Sullivan, Hello Cloverdale

At 4 pm on July 10, the gates closed for the last time for public access to the FVHRS Sullivan car barn. Because of the impending move to Cloverdale this year, it was decided that the usual schedule of monthly open houses from May to October couldn't be accommodated, so two dates were selected for the final public events before the move.

June 5 and July 10th were beautiful days, sunny and warm. Everyone enjoyed the last opportunity to visit the barn, inspect BCER

1225 and 1304, eat a few hot dogs, ride the speeder for the last time, blow the steam whistle, and listen to a few tunes from 'Circle of Friends,' enjoy a few classic autos, and chat with the volunteers.

"It was wonderful to wow the youngest and bring a misty memory back for the young at heart who rode the trams across the valley," said FVHRS Secretary Allen Aubert. "We are now moving in to a new phase of operations and certainly looking forward to that, but we'll still hold fond memories of where it began and the fun of sharing it all with the public. Next year, we're looking forward to 'running on the tracks' so people can finally ride on BCER 1225."



Myrna McCrae
Volunteer



Speeder 1225 1/2



The volunteers July 10, 2011



Director Jerry Gosling

End of the line for original Sullivan Station



The original BCER Sullivan Station was located on the north side of the tracks across from the FVHRS yard.

After the passenger service was cancel-

led in the 1950s the station was removed and served for many years on a local farm as a chicken coop. After the FVHRS established its yard, the coop/station was moved to a space behind the car barn and trailer.

The Surrey Heritage Advisory Commission reviewed the condition of the structure and despite its noble past, agreed it was beyond rehabilitation.

"It was amazing we even got it to the compound in

one piece," said FVHRS Chair John Sprung. "The building no longer had a floor, the windows and doors were gone, and the open passenger waiting area had long ago been removed, so there wasn't much left."

Respected heritage consultant, Donald Luxton of Vancouver issued a letter confirming the deterioration was too far advanced for rehabilitation, so it was demolished. Vice-Chair, Bob Ashton and his volunteers removed various pieces and mounted them in a display frame to be located at the new Cloverdale site.

In a final irony, they found a few chicken eggs, still intact in the roof of the building - no yoke!

The replica Sullivan station will be relocated to a new site at Sullivan eventually.



Report on 1225 - Bob Ashton 13

Summer 2011



Side view of 1225 sitting on jacks awaiting the return of the trucks from Carr's Machining - see page 7



Front view of the grand old car including headlamp



The air lines are pressurized and working.

"With close to 17,000 volunteer hours and still climbing, rehabilitation of BCER 1225, above the floorboards, is virtually complete. The only parts still needing to be fitted are the two train door latches. Since we only had one, we used the parts from it to have a new one recast. The parts are being cleaned by volunteer Richard Sutcliffe.

Volunteers Neil Wilkie and Operating Superintendent Ron Powers are solving the puzzle of air leaks from the rehabilitated air compressor. Since we have quite a number of new air parts it appears these are causing the old air valves to leak. Most internal parts are just worn out from years of use. We are hoping to have new parts made where necessary.

Thanks to volunteers Wayne Abbott, Larry Perkins and Richard Sutcliffe, work on rehabilitation of the trucks is proceeding at a satisfactory rate. At the time of this writing the trio have put in hundred's of volunteer hours. They have been guided by machinist Shane

Carr, owner of Carr's Machining, who is overseeing the work. The truck rehabilitation is expected to be completed and the virtually new trucks returned to the FVHRS by the end of October.

We wish to thank corporate member SRY(Raillink) who are being extremely helpful securing special bolts and lubricants. Further, we wish to acknowledge and thank Cloverdale Paint (Newton) who continue to supply all the paint and supplies we need to paint, not only the body of 1225, but also the truck parts.

To go along with the trucks parts, of course, are the motors and we thank SMS Equipment (Mining Division) in Port Coquitlam for their continuing support over the past few years. They have completely rehabilitated the 4 GE 204 motors used on the car and have also rehabilitated the air compressor.

One other company needs a huge salute is Century Pacific Foundry of Surrey. They cast numerous new parts that are needed on the trucks."



Interior views of BCER 1225 showing the smoking section (left), the non-smoking, upholstered passenger cabin, and a look at the ceiling detail in the car. - photos by Bob Ashton



Eastbound at the Sumas Powerhouse, Vedder Mt.
Approx 1917



BCER Car 1225 on its way to Steveston - Donated by Bill Watson *



Last run, nose to nose at
Langley Prairie
September 30, 1950



BCER Chilliwack Electrical Sub-Station*



Cloverdale northwest view from powerhouse*



Demolition of the Cloverdale Sub-Station *



Cloverdale with tracks on 176th Street *



Early Cloverdale looking north along 176th *



Sullivan Station Tram Stop*



Yarrow students interurban tour 1955



Great Northern RR Cloverdale station Circa 1920

* date unavailable

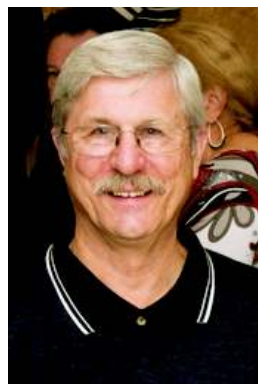
FVHRS Board of Directors 2011

Summer 2011

15



John Sprung,
Chair



Robert Ashton,
Vice-Chair



Allen Aubert,
Secretary



Stephen Plant,
Treasurer



Rene Derhoycabal,
Director



Ron Powers,
Director



Jerry Gossling,
Director



Roy Mufford,
Director



Peter Holt,
Director



Ray Hudson,
Communications



Bill Watson,
Director



Councillor
Barbara Steele
City of Surrey liaison



Fraser Valley Heritage
Railway Society

NEWS

Published by the Fraser Valley Heritage Railway Society for its membership, sponsors and limited public distribution.

The Editorial Board welcomes brief letters and stories recalling when BCER's interurban trains plied the rails between New Westminster and Chilliwack.

Send contributions to:
Ray Hudson, Editor, FVHRS News
e-mail rayhudson@dccnet.com

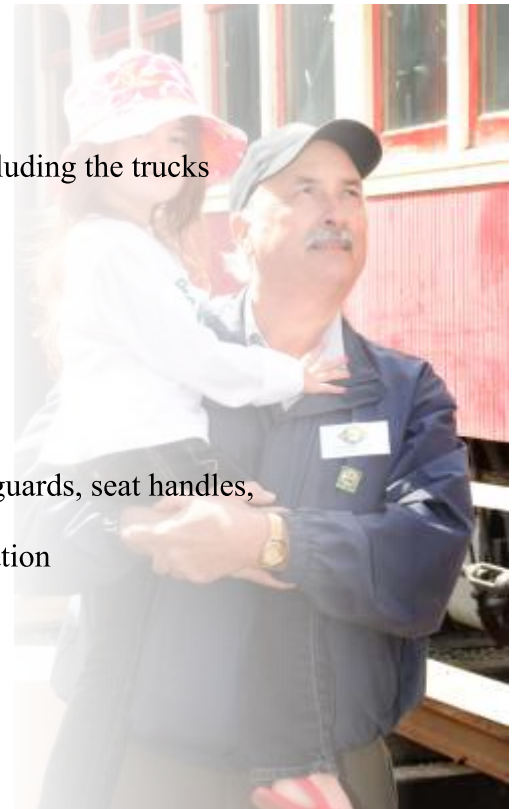
For more information contact:
Allen Aubert, Secretary, FVHRS
1045 - 165th St. Surrey, BC V4A 9A2
Website: www.fvhrs.org

- Those Companies & Individuals That Share Our Dream



BCER 1225 Acquisition & Rehabilitation Project:

- 20+ Volunteers working on BCER 1225 rehabilitation - 16,984 volunteer hours to July 31/11
- ABC Custom Brokers Ltd. - border and custom services for car 1225
- Airarms Industrial Ltd. - fastners
- Aluma Systems - use of scaffolding
- BC Fasteners -fasteners for BCER 1225 rehabilitation
- Brushstrokes (Tom Thirlwell) - exterior Painting
- Burnaby Village Museum - loan of equipment & expertise
- Carr's Machining - Machining Services 1225 truck parts
- Century Pacific Foundry - Casting of new 1225 truck parts
- City of Surrey - funds toward acquisition & rehabilitation of 1225 including the trucks
- Cloverdale Paint (Newton) - all paint, brushes and other materials
- Coast Capital Savings - 1225 rehabilitation
- Dynopro Coatings Ltd - brass items
- Dendoff Springs - donation of springs
- Friends of BCER 1223 - expertise and loan of various items
- G&F Financial Group - 1225 rehabilitation
- GVC Credit Union - 1225 rehabilitation
- Gwill Cranes - craning services
- Hastings Brass Foundry Ltd. - all brass fittings for interior windows, guards, seat handles, luggage racks and rope hangers
- Industrial Plastics and Paint - polymer filler for BCER 1225 rehabilitation
- Judy Higginbotham - donation towards the rehabilitation of 1225
- Ken Estensen, member - funds for BCER 1225 rehabilitation
- KMS Tools - tools & supplies
- Makita Canada - tools and equipment supplies
- Nickel Bros. Moving - raising BCER 1225 for truck removal
- Nu-Brite Industries - brass items
- Old English Car Club -1225 rehabilitation



A SALUTE TO OUR DONORS

Summer 2011

17



BCER 1225 Acquisition and Rehabilitation Project:

- Pacific Bolt Mfg. Ltd. - replacement of broken mounting bolts
- PNR Rail Works - providing & locating of temporary track
- Polygon Homes Ltd - 1225 rehabilitation
- Province of BC - funds to acquire BCER 1225
- Province of BC Gaming - funds toward rehabilitation of 1225
- Scotia Bank - 1225 rehabilitation
- Shell Busey's House Smart - fastenings
- Specialized Performance Developments - metal fabrication for BCER 1225 stairs
- SRY Raillink - technical support
- Starline Windows - donation of window safety glass
- Superior Electroplating - Brass items
- SMS - motors and air compressor rehabilitation

BCER 1304 Acquisition and Rehabilitation Project:

- ABC Customs Brokers Ltd. - border/customs services - 1304
- BC Tourism (Government of BC & City of Surrey Grant) - acquisition event
- Cloverdale Paint (Newton) exterior and interior paints and brushes
- Province of BC Gaming - funds for rehabilitation
- Steveston Interurban Restoration Society (SIRS) - acquisition of 1304

Carbarn Project:

- A&B Rail - car barn track
- Cameron Land Surveying - site survey for car barn construction
- City of Surrey - funds to construct car barn
- Cloverdale Paint (Newton) - paint and finish (interior)
- Colwin Electrical Group - electrical wiring
- Fraser Valley Aggregates - Gravel for car barn
- GVC Credit Union - construction funds
- Hil Ron Construction - car barn construction
- Horizon Landscaping - site landscaping
- JJM Construction - site clearance for car barn
- Joe Dhaliwal - trucking)
- Ken Breaks - site clearing and grading
- Mainland Construction
- Mid Valley Fencing - site fencing
- Pro Image Gutters - gutter replacement
- RDM Enterprises - site grading
- Rodgers Industrial Moving and Rigging - moving of spare motors
- Scotiabank - painting and landscaping)
- The Lark Group - car barn construction management services
- Valley Alarms - provision of security alarm system

Cloverdale Replica Station:

- Fraser Downs Racetrack & Casino - station plans
- Mr. Andrew Ward - FVHRS member - station plans



Community Outreach & Public Education Programme:

- **Leader Newspaper - media sponsor**

- Province of BC - advertising and promotion
- Surrey Foundation - advertising and promotion
- Circle of Friends - music at public events

Liability Operating Insurance: *(For 2012 Sullivan to Cloverdale operations)*

- City of Surrey

Cloverdale to Sullivan Fundraising Campaign:

- 52 Individual donations (Jan to July 2011)
- Leader Newspaper - continuing campaign promotion

Cloverdale Spur (Connecting to SRY Spur and Mainline):

- BC Hydro - access to BC Hydro provincial property
- City of Surrey - funds toward cost of spur construction
- Mainland Sand & Gravel - supply of sub-base material
- PNR Railworks - donation toward track installation
- RDM Enterprises - sub-base construction
- Underhill Geomatics Ltd. - site survey professional services

Sullivan Station Project & Site:

- BC Real Estate Foundation - funds to construct Sullivan replica station
- Cloverdale Paint (Newton) - interior & exterior paint
- Colwin Electrical Group - wiring of station
- KK Quality Painting - Sullivan station painting
- Lark Group - construction management services
- Pidoca Construction - Sullivan station construction
- Polgyon Homes Ltd. - funds toward station construction
- Roy Mufford, member - moving original station
- Scotia bank - funds for painting
- Wayjo General Contracting - station flooring
- Wood Works - station flooring

Speeder Track Project:

- SRY Raillink - donation of track
- RDM Enterprises - ballast leveling
- Ken Breaks Bulldozing - speeder site leveling
- PNR Railworks - speeder track installation & donation of ties
- 35 PNR Railworks track layers - labour to install track (volunteer)
- Mainland Sand and Gravel - ballast for speeder track and driveway gravel
- Coast Capital - security fencing expansion
- Lark Group - site layout and levels

A SALUTE TO OUR DONORS

Summer 2011

19



Railway Model Project:

- Army & Navy Department Stores - model railway exhibit
- Sim Video West - donation for use of railway model

Workshop Project:

- Bogdonov Pao Associates - structural engineering services
- Country Lumber - lumber supplies
- Colwin Electrical Group - wiring
- Cloverdale Paint (Newton) - interior paint supplies
- Province of BC Gaming - funds to construct workshop addition to car barn
- Remple Concrete - Readymix for foundations and floor
- Roy Mufford, member - excavation, back fill and associated work
- The Lark Group - project management services

Various Contributions and Services:

- 281 individual member donations and memberships
- Arrow Woodcraft - landscaping services
- Buchanan Printing - brochure and newsletter printing
- Circle of Friends - entertainment at open houses, other events
- City of Surrey - Sullivan land lease grant
- Digigraphix Inc. - printing
- Eagle West - delivery of storage container
- Fast Signs - exterior signage
- Fraser Valley and Equipment - landscaping equipment
- Hampton Inn & Suites Langley Bypass - meeting rooms
- HomeLife Benchmark Titus Realty - open house co-sponsor
- Ken Estensen, member - funds for FVHRS memorabilia & souvenirs
- Keyman Mobile Lock Service - provision of lock services
- Lark Group - meeting rooms
- Makita - supply of tools
- Peter Holt, member - DVD Production
- Premium Brands/Harvest Foods - open house hot dogs
- Printfastic - brochure printing
- Prodigy Records Corp. - DVD production
- RAM Construction Ltd. - donation of large storage trailer
- Rodgers Industrial Moving and Rigging - heavy equipment moving
- Roy Mufford, member - backhoe work site grading and drainage installation
- Supersave Group - donation of portable toilets and removal services
- Supersave Group - donation of waste container and removal services
- Terry Lyster & Kelly Breaks - for the DVD Production
- The JD Wallace Foundation - funds for project feasibility study
- United Protection Security Group Inc. - site security on going
- Vancity Credit Union - grant for purchase of audio visual equipment
- Weeks Insurance & Financial - open house co sponsor

