

The Long (Rail)Road To Cloverdale



Moving Day August 15, 8 am from Sullivan

Call for Volunteers ~ Page 16

February 9, 2011, a number of volunteers and directors, went to the new Cloverdale site for the first time.

Early in 2011, the Surrey City Council approved the relocation of the Fraser Valley Heritage Society to property at 176th Street, where a larger car barn would be constructed. In addition, the FVHRS planned to erect a replica of the original Cloverdale BCER station.

After preparation of the property was complete, construction of the car barn began in March 2012, and is nearing completion around the end of July, early August.

This special edition of the FVHRS Newsletter is designed to show you the progression from clearing the site to nearing completion of construction.

We have chronicled the past year in the Society, including the last two open houses at Sullivan Station and the decommissioning of the Sullivan Station site.

The FVHRS is on the verge of becoming an operating entity to operate Car 1225 from Cloverdale to Sullivan Station and back and so will begin the "operating" stage, next Victoria Day Weekend (2013). This means we'll need very many volunteers to operate the cars, conduct them, take tickets, sell tickets, manage the station, service the riders, and yes, even continue with rehabilitation duties. Car 1304, the Connaught Car, needs to be made ready to take its place with 1225, and so we'll need a whole cadre of volunteers for that as well. We've posted a notice on the back page for those of you who are interested in joining us for almost any task.

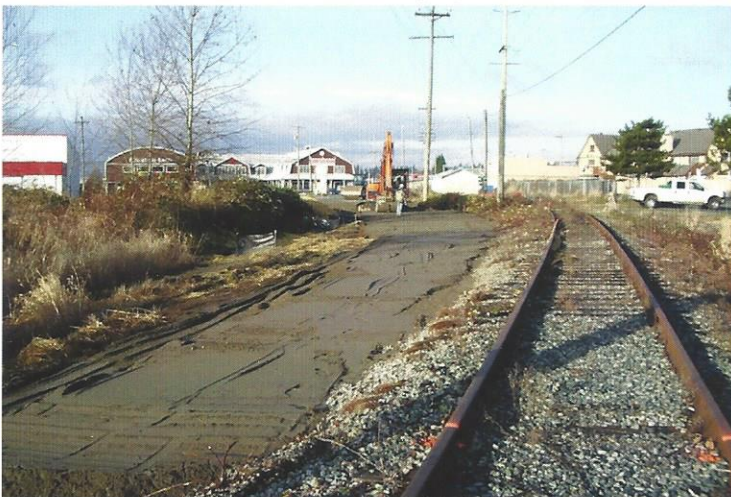
This is an exciting time to be part of the FVHRS and we are going to see great things occur as the result of many hours of hard and dedicated work.



August 2011



November 2011 Rail Bed Connection To Track



SIGNING THE PAPERS TO MAKE IT OFFICIAL

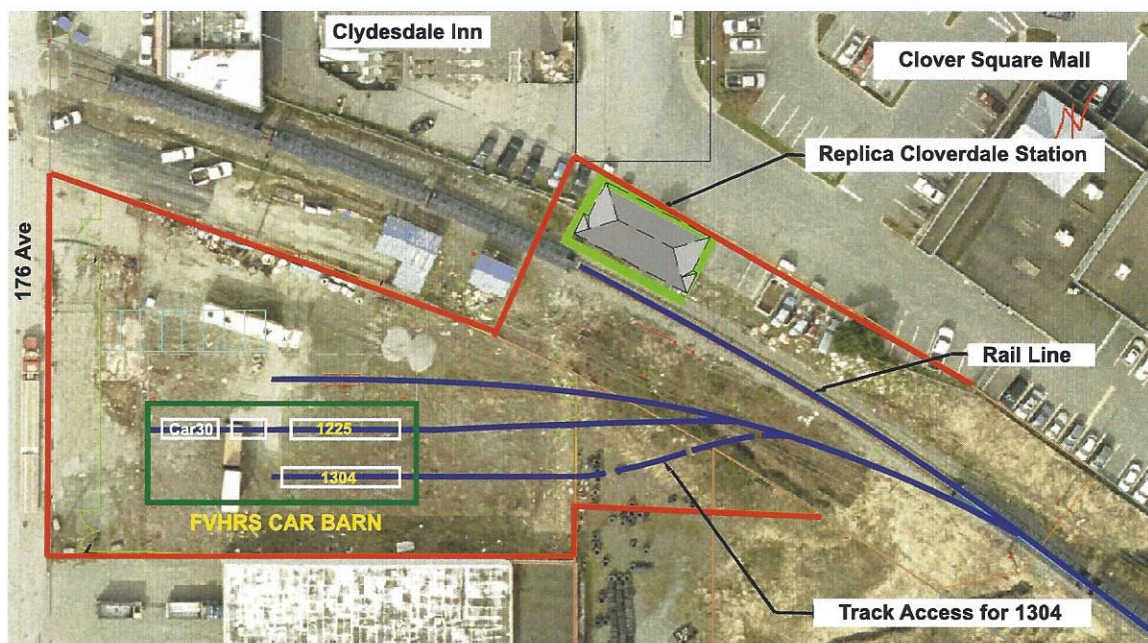


Special March 7 board meeting held in the frigid Sullivan work shop...the meeting where the Cloverdale design build contract was signed.

March 13 2012

5554 - 176 St (17600)		B-11-007808-0-0	
FVHRS Car Barn		BLDG INSP. AREA 6	
CITY OF SURREY			
BUILDING PERMIT			
PROJECT ADDRESS: 5554 - 176 St FVHRS Car Barn			
LEGAL DESCRIPTION: LT 77 SEC 5 TP 8 BCP32766			
ZONE: IH		WORK PROPOSED: New Industrial F2	
BUILDING TYPE: Repair Garage		PERMIT TYPE:	
WORK DESCRIPTION: Car Barn for Fraser Valley Heritage Rail Society. Base building: BCBC 06. Building area: 568 m ² . F-2 Occupancy. Article 3.2.2.72. governs construction. 2 storeys. 1 street. Combustible construction. Sprinklered. Fire alarmed. No standpipe system. Floor req'd to be fire separation with 45 min. fire-resistance rating. Roof rating not req'd.			
APPLICANT: Allen Aubert, Fraser Valley Heritage Railway Society 1045 165 St. Surrey V4A 9A2			
BUILDER / GENERAL CONTRACTOR: Trevor Massey, Lark Projects Ltd. 17802 86 Ave Unit 101 Surrey V5C 7X1			

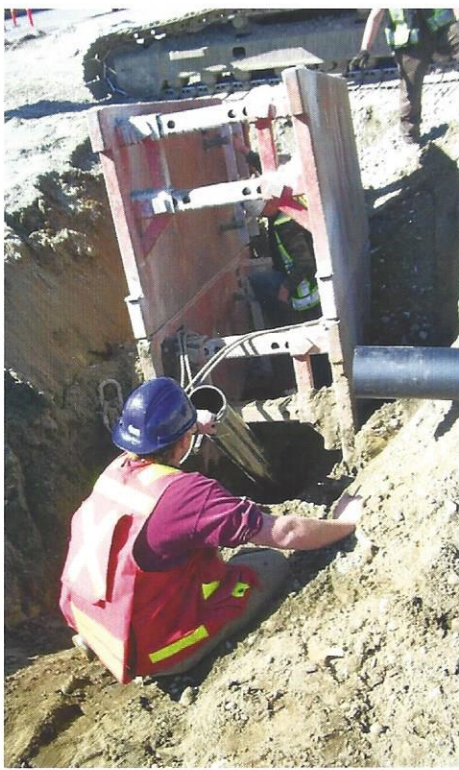
FVHRS SITE PLAN AT CLOVERDALE



We are located at 176th Ave, just south of Highway #10 where the original station was.



Cloverdale site construction pics March 20 - 31 1212: Foundations for the Car Barn.





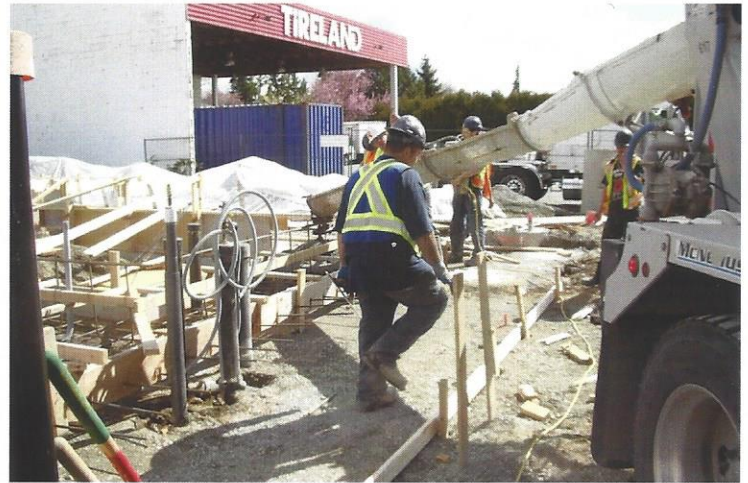
End of March 2012



April 2012 barn foundations and track support



End of April 2012 laying the barn track



April 2012 barn foundations are poured



Photos in this edition of FVHRS News are primarily by Allen Aubert with additional photos from Robert Ashton, and Ray Hudson, who is also your editor.



End of April installing the perimeter drains

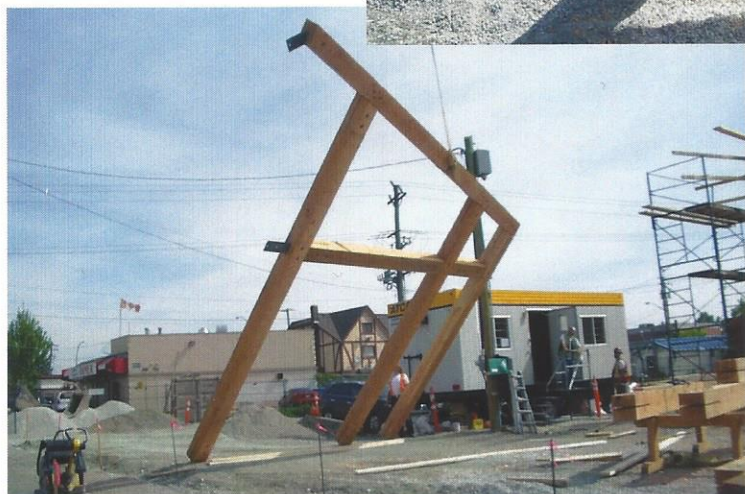


May 2012 Bring on the building materials





May 9th



By mid-May the building is taking shape



Our New Home ***Fall 2012!***

Design-Build / Project Management:

The Lark Group

Architect: Site Lines Architecture Inc.

Structural Engineer: Bogdonov Pao Associates Ltd.

Civil Engineer: R.F. Binnie & Associates Ltd.

Electrical: (design-build) Colwin Electrical Group

Mechanical: (design-build) Quadra Mechanical

Land Surveyors: Underhill Geomatics Ltd.

Site Works: RDM Enterprises Ltd.

Landscape Architect: van der Zalm + associates inc.

Track Design: Hatch Mott MacDonald,

Track Installation: PNR RailWorks Inc.

... with the generous support of the
City of Surrey and Southern Railway of BC



www.fvhrs.org



BCER Car 1225



May 17 the workshop is framed



May 24 the upstairs office is framed

May 20, second last open house



What else is there to say?

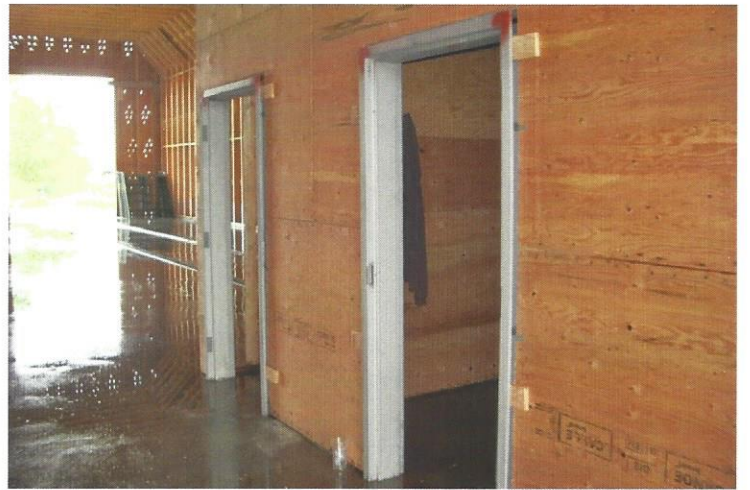
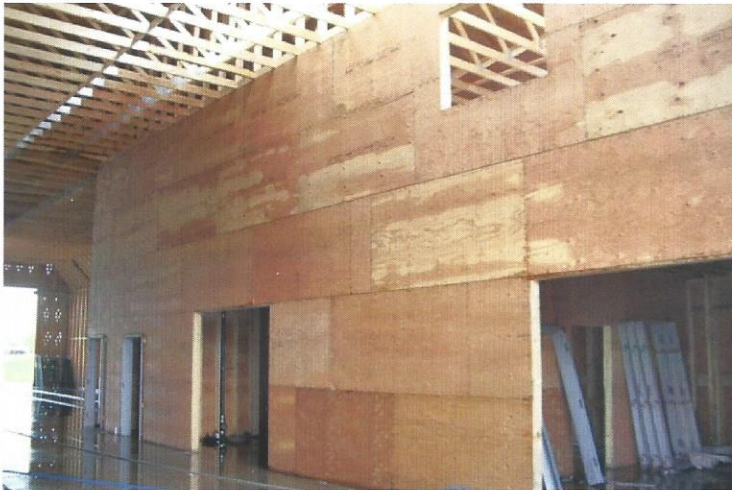


May 29 - June 2





Members of the Board of Directors visit the new barn on June 7, 2012





June 17, the final open house at Sullivan Station



After the open house at Sullivan Station it's time to prepare to move



De-commissioning Sullivan Station, June/July, 2012





Green Cladding as at Sullivan



Getting close to completion - July 13th.

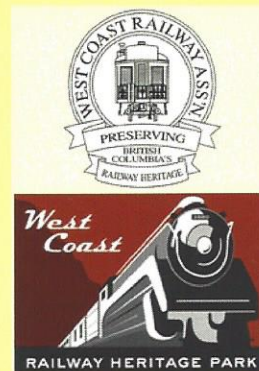


July 13, 2012



Speeder Station

The speeder station has been removed from the Sullivan Station property and sent to the West Coast Railway Museum Park in Squamish.



ON THE RIGHT TRACK TO CLOVERDALE



We will move the cars to Cloverdale on Wednesday, August 15.

Removal from Sullivan at 08:00

Delivery at Cloverdale 12:00 noon.

64th Ave and 152nd Street

176th Street behind the Clyde Sale Inn

Come on out and watch the BCER Interurban Cars Fly.

VOLUNTEERS ARE URGENTLY NEEDED

As we not only move to Cloverdale, but move from the rehabilitation of Car 1225 to operating the car as a heritage rail experience, we will require many volunteers to assist us on Saturdays, Sundays and holidays, **beginning in May of 2013 through October.**

We need Operators/Drivers, (in another era known as "Motormen") Conductors, Station Masters, mechanics, on-board hosts, for the Interurban car. As well we need volunteer staff to assist with the non-operational side in such things as the sale of tickets, souvenirs, and otherwise assist passengers to enjoy the experience.

Whether you can offer just one day per month, or turn out every weekend, **starting September 8, 2012**, we will be delighted to have you aboard. Training will be provided, as well as certification for operating staff as required.

Training will be conducted throughout the fall and winter at our Cloverdale Barn so we will be ready to roll by May of next year.

We will also be recruiting for volunteers who are interested in the rehabilitation of Car 1304 in a similar fashion as Car 1225.

Interested? Please contact Myrna at 604.597-9704 to register